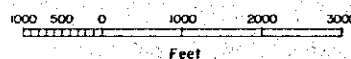
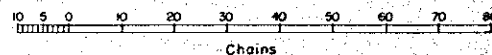
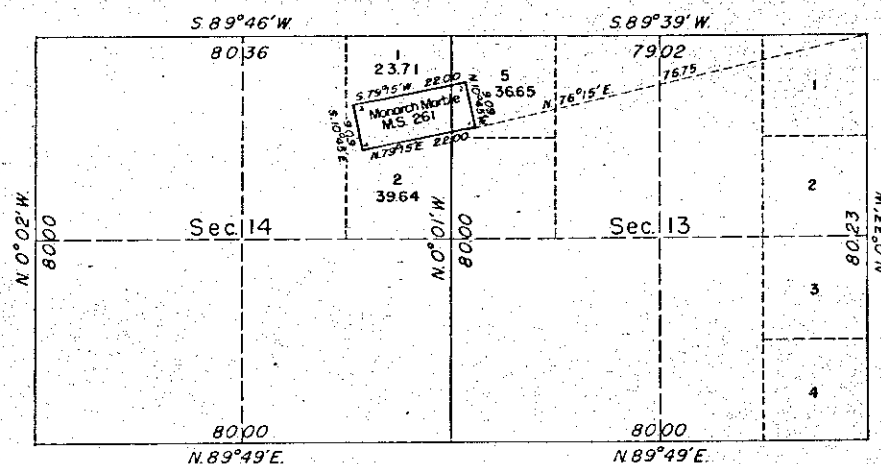


TOWNSHIP N° 9 SOUTH, RANGE N° 38 EAST, OF THE WILLAMETTE MERIDIAN, OREGON. 247  
 SUPPLEMENTAL PLAT OF SECTIONS 13 AND 14.



Scale:  $\frac{1}{15,840}$



THIS PLAT SHOWING AMENDED LOTTINGS  
 CREATED BY THE SEGREGATION OF THE  
 PATENTED MONARCH MARBLE CLAIM, MINERAL  
 SURVEY NO. 261, IN SECS. 13 AND 14,  
 T. 9 S., R. 38 E., W. 4., OREGON, BASED  
 UPON THE PLAT APPROVED FEBRUARY 10, 1897,  
 IS PREPARED IN ACCORDANCE WITH BUREAU OF  
 LAND MANAGEMENT INSTRUCTIONS 54783 E:WHA  
 DATED OCTOBER 21, 1949.

UNITED STATES DEPARTMENT OF THE INTERIOR  
 BUREAU OF LAND MANAGEMENT

WASHINGTON, D. C., NOVEMBER 9, 1949  
 THIS PLAT, SHOWING AMENDED LOTTINGS, IS BASED UPON THE  
 OFFICIAL RECORDS AND, HAVING BEEN CORRECTLY PREPARED IN  
 ACCORDANCE WITH THE REGULATIONS, IS HEREBY ACCEPTED.

FOR THE DIRECTOR

*William F. Richards*

CHIEF, BRANCH OF SURVEYS